

Trash Skimmer Construction

- Main tank - 1/2" (12mm) thick throughout, Roto-Molded LLDPE + Regrind.
- Flotation Tanks - Roto-molded from non-corrosive polyethylene, one piece heavy wall construction with Stainless Steel inserts.
- Fasteners - All 304 Stainless Steel or better.

Water Circulation Unit

- 3/4 HP 120 Volt motor
- Stainless steel motor shaft and housing
- Continuous duty 120V or 230V Single Phase
- High performance propeller and renewable Zinc anode for corrosion protection in harsh Saltwater environments.
- All weather, oil resistant power cord.
- Full Two Year Warranty - "Peace of Mind"

Aeration System

- Vacuum Driven Aerator (VDA)

Control Panel

- Housed within a Hoffman fiberglass enclosure for trouble free service.
- Meets or exceeds all UL, CUL & CSA Standards as well as any international standards.

Installation

- The Trash Skimmer can be mounted to any floating dock system using the mounting brackets provided.
- MAI will work with any customer to ensure there is a secure mounting system in any other situation.

Electrical Power Requirements

- Power input - 30A 120V GFIC breaker. Can operate on as little as 15A 120V power supply.
- The Control Panel can be hard wired to available power or a power cord supplied.



International Electrical Compatibility

- All electrical components are available in either 120 Volt 60Hz or 230 Volt 50Hz.

Level Control

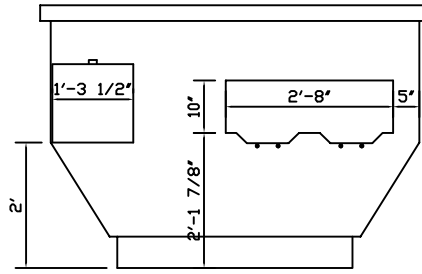
- Ensures trouble free performance in this debris filled environment.

Operating Cost Estimate

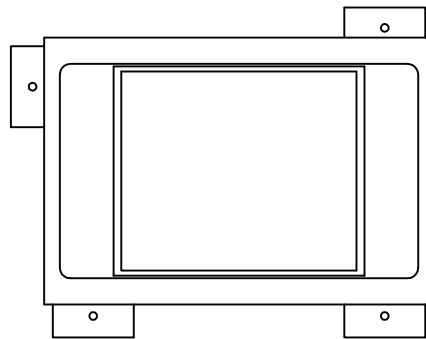
- The Trash Skimmer has used approximately 25Kwh/day. In the USA North West this works out to \$1.30/day.

Limited Warranty

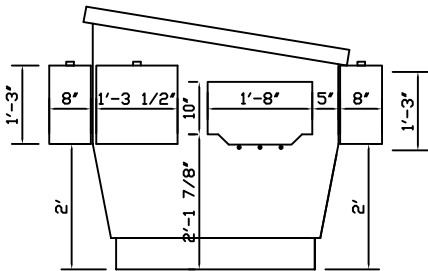
- Trash Skimmer Roto-Molded Parts - 10 years
- Water Circulation Unit - 2 years
- Control Panel - 3 years



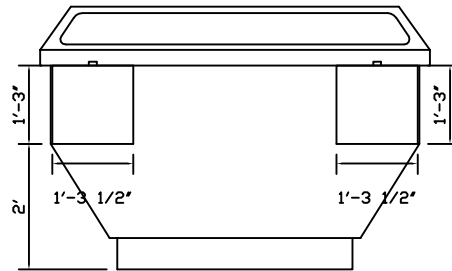
Back View



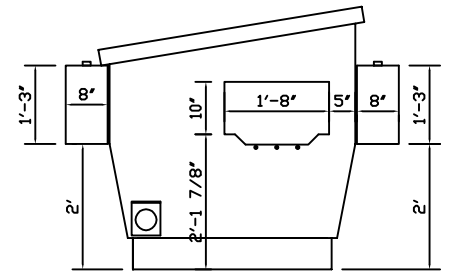
Top View



Side View



Front View



Side View

Float Tank & Door Location